



NATUREWORKS

TREE OF LIFE - SOPOONG - STH KOREA

info@natureworks.com.au


www.natureworks.com.au

07 3289 7555



NATUREWORKS DESIGNS & MANUFACTURES THE LARGEST TREE IN THE WORLD

A life-time of
Replicating the ART of
NATURE & the Bizzare



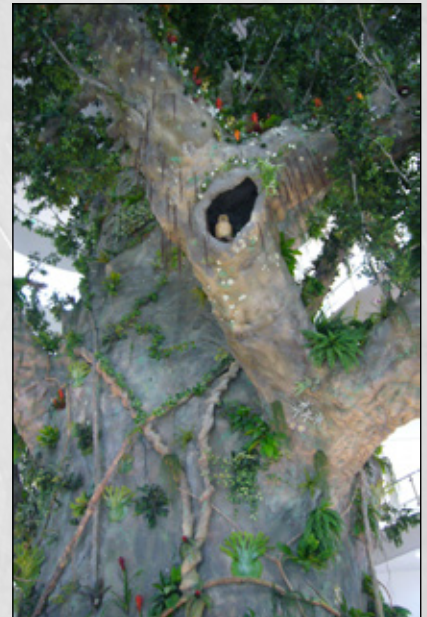
Natureworks Pty Ltd
732 Mt. Glorious Rd
Highvale (near Samford)
Queensland Australia 4520
ABN: 22 061 855 525





TREE OF LIFE - Largest tree in the world

Tree Of Life - Seoul Korea - 2008



The clients' intent was to lay claim to building the largest artificial tree in the world. It is over 11 metres in diameter at the base, through which the public can walk and the diameter where it "breaks through" the ceiling is still 6 metres wide.

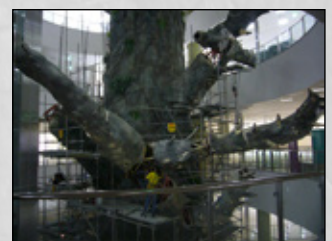
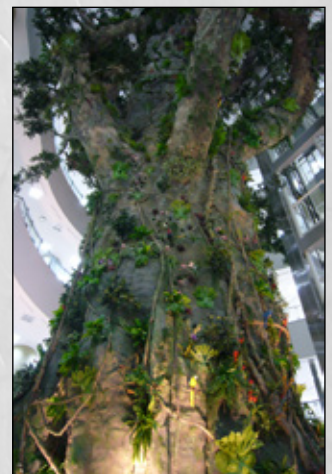
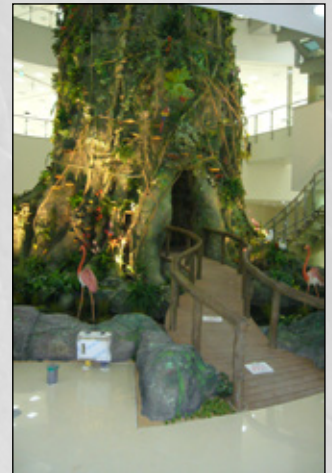


TREE OF LIFE - Largest tree in the world

Tree Of Life - Seoul Korea - 2008

This tree was built at a cost of 1.7 million dollars in 2008 by a team from Natureworks.

The trunk was built on site, but the branches were prefabricated at the Highvale studios in Samford, Australia and shipped in 10 x 40ft containers to site.





TREE OF LIFE - Largest tree in the world

Tree Of Life - Seoul Korea - 2008



This tree rises through 6 levels of a shopping mall in Sopoong in Seoul, South Korea.

